



WHITES KENNEL ROAD

Alamance County, NC



General Information

Site Address:	Whites Kennel and Anthony Road
Site Size:	125.65 Acres
Price	\$35,000 per acre
Zoning:	I-1A

Utilities

Electric:	Duke Energy – Two 24 kV circuits adjacent to the site. The nearest substation is 2.7 miles from the site.
Water:	City of Burlington – 17 mgd excess capacity
Wastewater:	City of Burlington – 6 mgd excess capacity in dry weather
Natural gas:	Piedmont Natural Gas Company
Telecom Fiber:	AT & T

Transportation Accessibility

Rail:	No
Nearest Commercial Airport:	Piedmont Triad international Airport
Distance to Airport:	40 miles
Distance to Interstate:	0.50
Highway:	Interstates 85/40

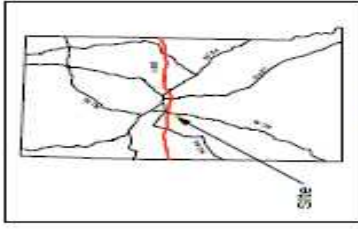
Additional Information

Site Prep/Due Diligence:	No due diligence has been performed
Air Quality:	Attainment
Other:	

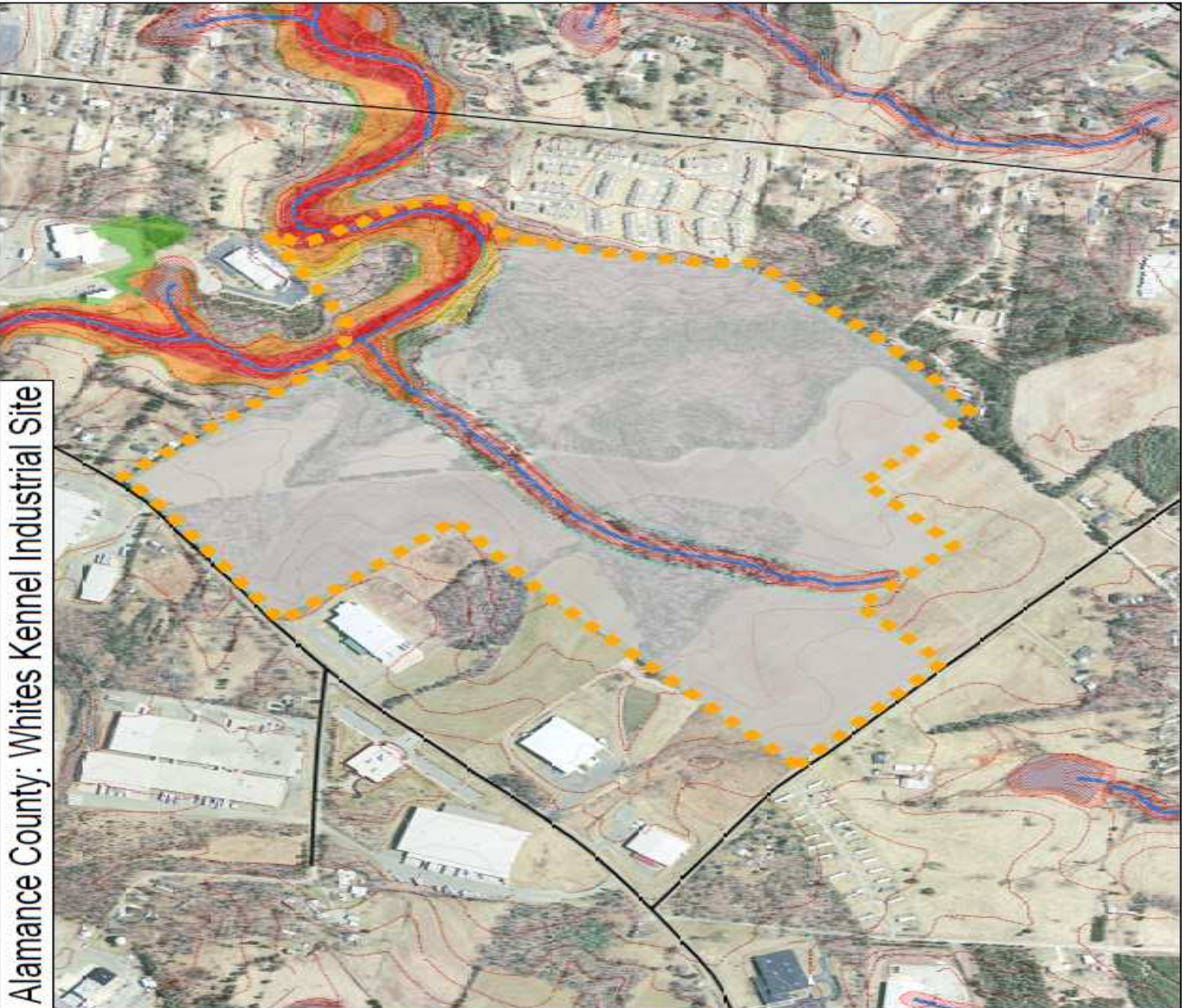
For further information, contact the Duke Energy Business Development Team

This site has participated in Duke Energy's Site Readiness Program. See www.ConsiderTheCarolinas.com for more information regarding Duke Energy's Site Readiness Program.

Buildable Area



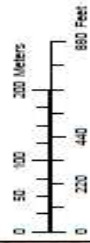
Vicinity Map



Alamance County: Whites Kennel Industrial Site

- Legend**
- Industrial Site
 - Buildable Area
 - Parcels
 - Highways**
 - Interstate
 - NC Highway
 - Local Roads
 - Steep Slopes
 - 2' Contours
 - 10' Contours
 - Stream Buffers
 - Wetlands
 - Wetlands
 - Fresh
 - FSI/A
 - FEMA Floodplains**
 - A
 - AE
 - FUTURE AE
 - X
 - X 500

Site Area = 127.3 Ac
Buildable Area = 103.2 Ac



This site has participated in Duke Energy's Site Readiness Program. See www.ConsiderTheCarolinas.com for more information regarding Duke Energy's Site Readiness Program.