



North Asheboro Site

Randolph County, NC



General Information

Site Address:	North Asheboro, US 220 Asheboro, NC 27203
Site Size:	290 Acres
Price	\$15,000 per acre
Zoning:	I - 2

Utilities

Electric:	Duke Energy – substation located adjacent to the property.
Water:	City of Asheboro – 12" line 900 feet from property with a capacity of 1,185 gpm at 100 psi.
Wastewater:	City of Asheboro – pump station at southern perimeter with a 6" force main into an 8" gravity sewer.
Natural gas:	Piedmont Natural Gas
Telecom Fiber:	North State Communications

Transportation Accessibility

Rail:	Yes
Nearest Commercial Airport:	Piedmont Triad International Airport
Distance to Airport:	36 miles
Distance to Interstate:	0.25 miles
Highway:	I-73/74

Additional Information

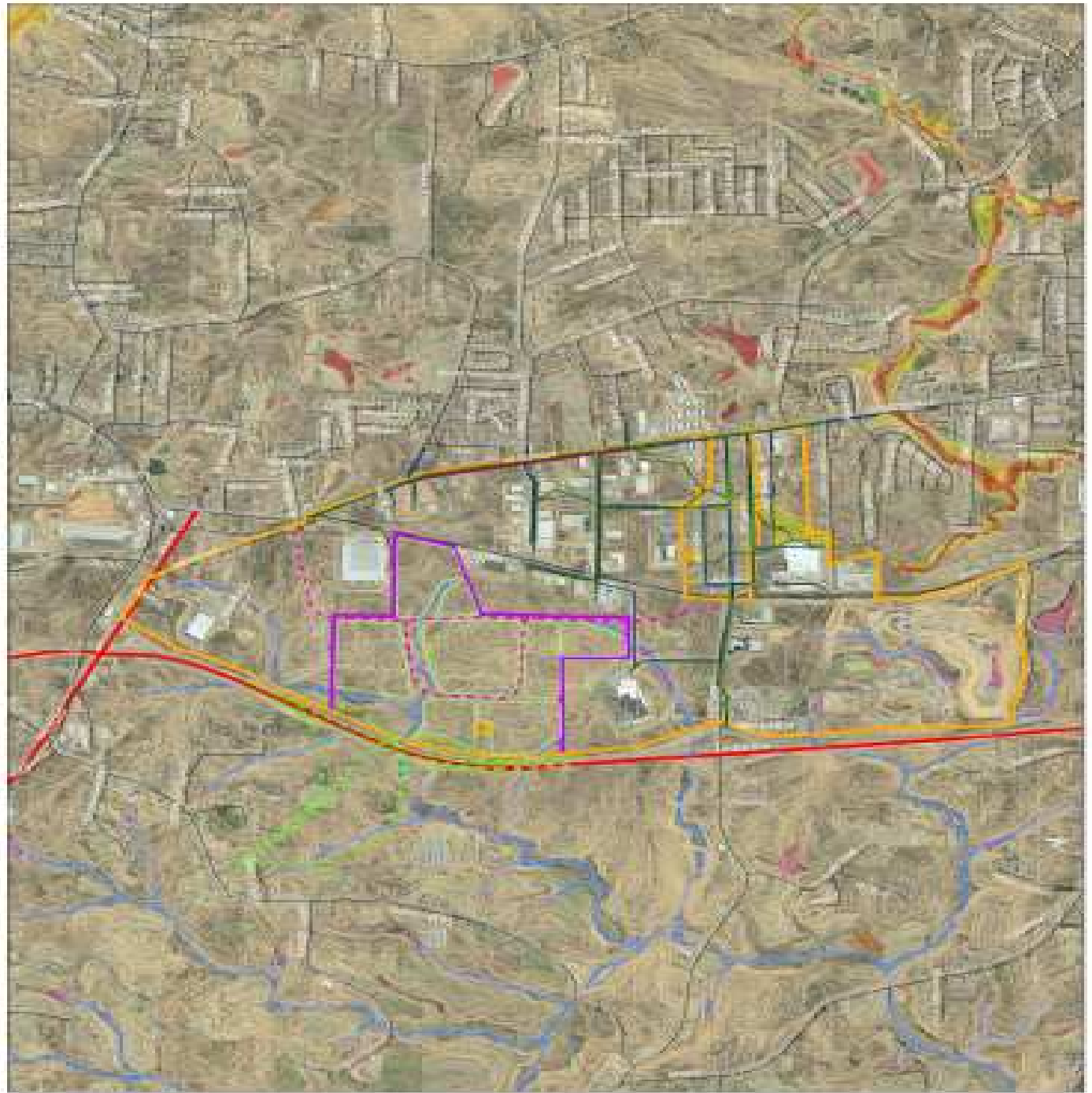
Site Prep/Due Diligence:	No due diligence has been performed
Air Quality:	Attainment
Other:	Need to verify developable acreage on either side of power line easement. A FEMA FIRM panel for this site is needed.

For further information, contact the Duke Energy Business Development Team

This site has participated in Duke Energy's Site Readiness Program. See www.ConsiderTheCarolinas.com for more information regarding Duke Energy's Site Readiness Program.

Uwharrie Industrial Park

Buildable Area



This site has participated in Duke Energy's Site Readiness Program. See www.ConsiderTheCarolinas.com for more information regarding Duke Energy's Site Readiness Program.